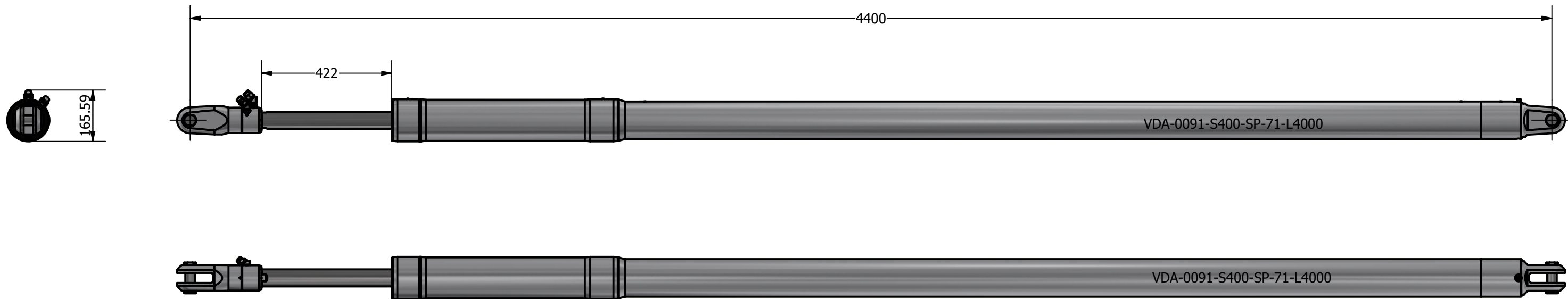
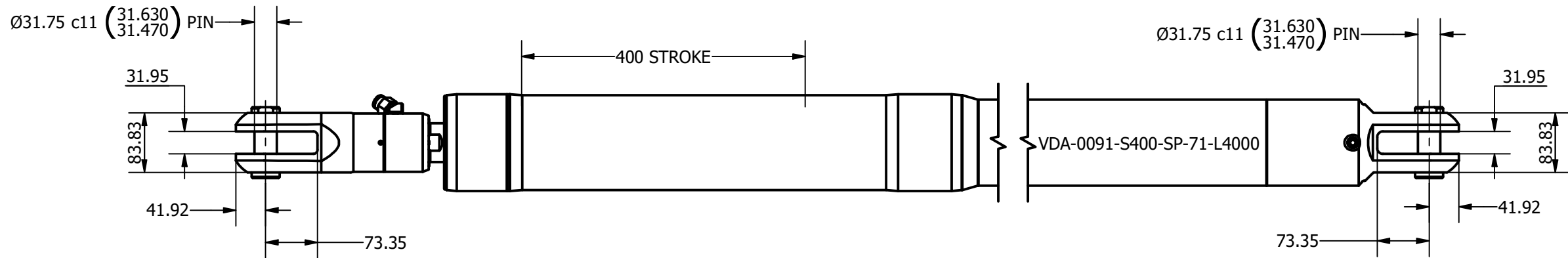
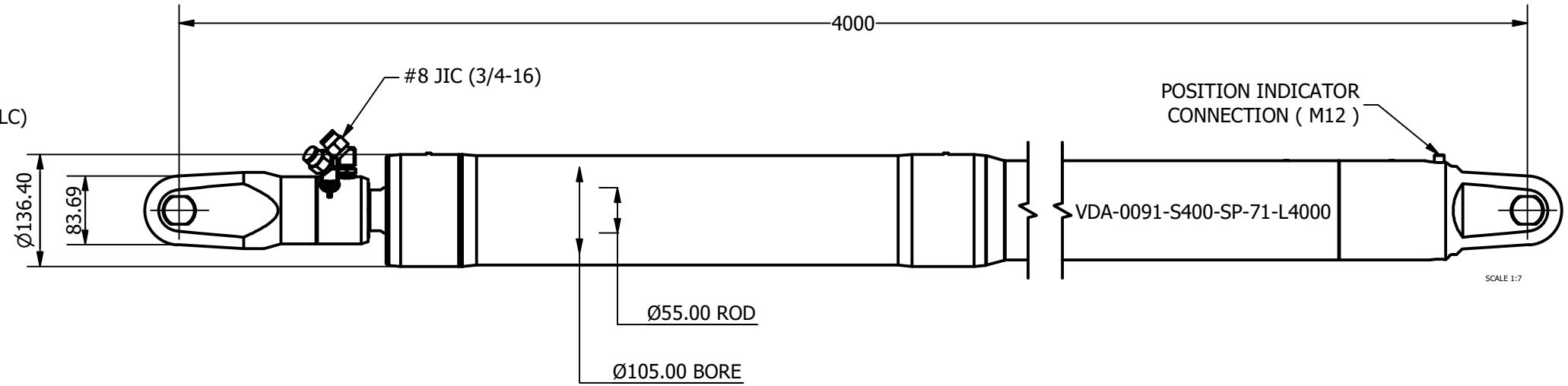



SIZE	-0091
MAX PCLC	4000 mm
PIN / GAP	31.75 mm
BORE DIA	105 mm
ROD DIA	55 mm
STROKE	400 mm
ESTIMATED WEIGHT (@4000mm PCLC)	73.0 Kg (-0.011 Kg/mm PCLC)
FULL BORE AREA (PUSHING/EXTENDING)	8659 mm ²
ANNULUS AREA (PULLING/RETRACTING)	6283 mm ²
OIL DISPLACEMENT (FULL BORE SIDE)	3.46 ltrs
OIL DISPLACEMENT (ANNULUS SIDE)	2.51 ltrs
MAXIMUM PUSH RELIEF @ 75 BAR	6620 Kg (64943 N)
PULL FORCE @ 150 BAR	9607 Kg (94248 N)
PULL FORCE @ 250 BAR	16012 Kg (157080 N)
MAXIMUM PULL RELIEF @ 350 BAR	22417 Kg (219911 N)

PI SIGNAL = 4-20mA



NOTE: CUSTOM STROKES, LENGTHS AND CLEVIS DIMENSIONS AVAILABLE UPON REQUEST

	Title ALUMINIUM DOUBLE ACTING VANG		Revision 2
	Drawing No. VDA-0091-S400-SP-71-L4000		Date Drawn By 09/11/2021 AL
	Tel: +44 (0)1202 596630 www.oms.ltd		© Copyright. All rights to this drawing and design are the sole property of OMS Ltd. This drawing must not be copied, communicated or loaned to any third party without the written consent of OMS Ltd.