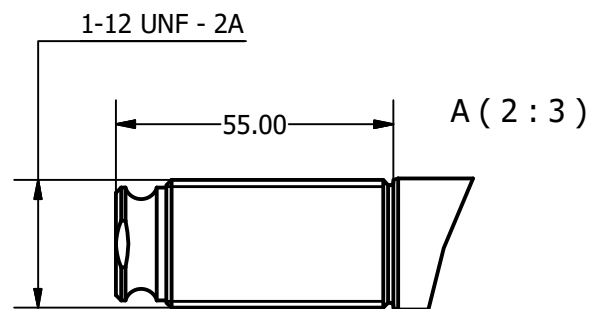
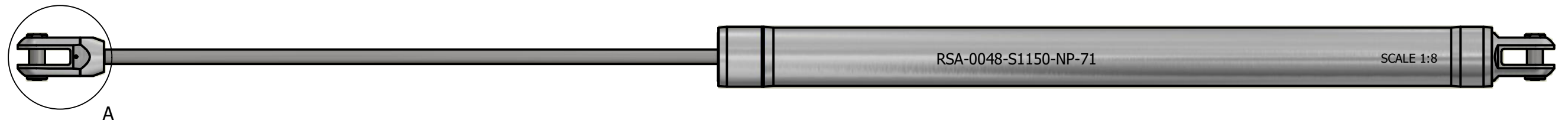
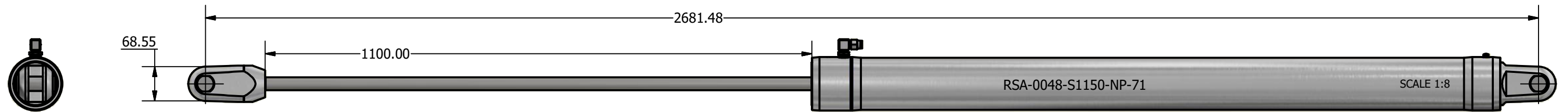
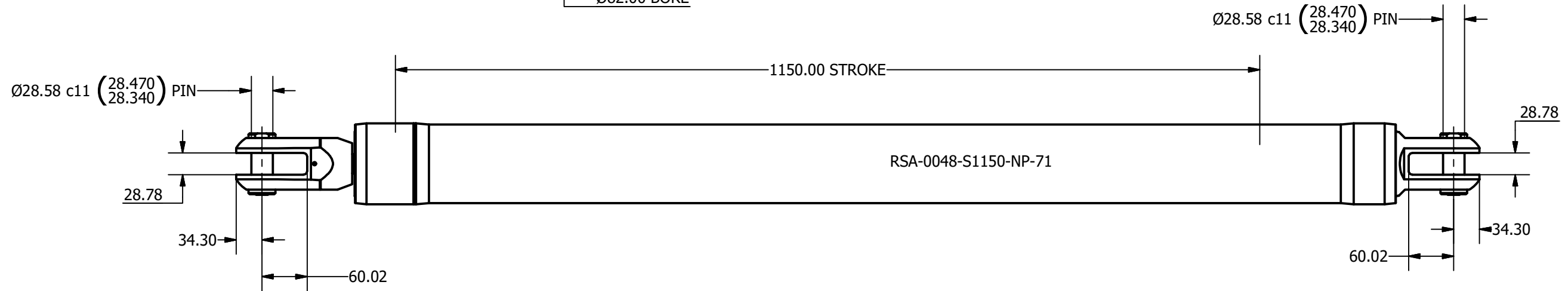
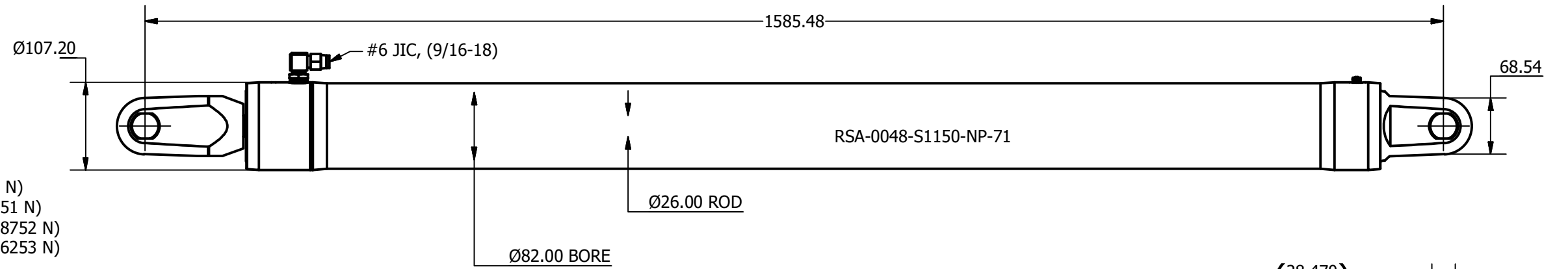

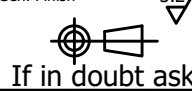


SIZE -0048
 PCLC 1585 mm
 PIN / GAP 28.58 mm
 BORE DIA 82 mm
 ROD DIA 26 mm
 STROKE 1150 mm
 WEIGHT 22.57 Kg
 FULL BORE AREA (PUSHING/EXTENDING) 5281 mm²
 ANNULUS AREA (PULLING/RETRACTING) 4750 mm²
 OIL DISPLACEMENT (FULL BORE SIDE) 6.07 ltrs
 OIL DISPLACEMENT (ANNULUS SIDE) 5.46 ltrs
 MAXIMUM PUSH FORCE @ 4 BAR 215 Kg (2112 N)
 PULL FORCE @ 150 BAR 7263 Kg (71251 N)
 PULL FORCE @ 250 BAR 12105 Kg (118752 N)
 MAX PULL FORCE @ 350 BAR (RELIEF) 16947 Kg (166253 N)



NOTE: CUSTOM STROKES, LENGTHS AND CLEVIS DIMENSIONS AVAILABLE UPON REQUEST

 Tel: +44 (0)1202 596600 www.oceanyachtsystems.co.uk	Title ALUMINIUM SINGLE ACTING GAS RETURN CYLINDER			Revision 2	Dimensions in millimeters & degrees Gen. Tolerance ± 0.25 Gen. Finish 3.2		
	Drawing No. RSA-0048-S1150-NP-71		Material	Finish AS MACHINED		 If in doubt ask!	
	Sheet 1 of 1	Scale 1:6 @ A3	Mass N/A	Date Drawn 17/09/2017	By A.N.		
	Mat. Cert.		Insp. Lev. III	Fin. Lev. A			